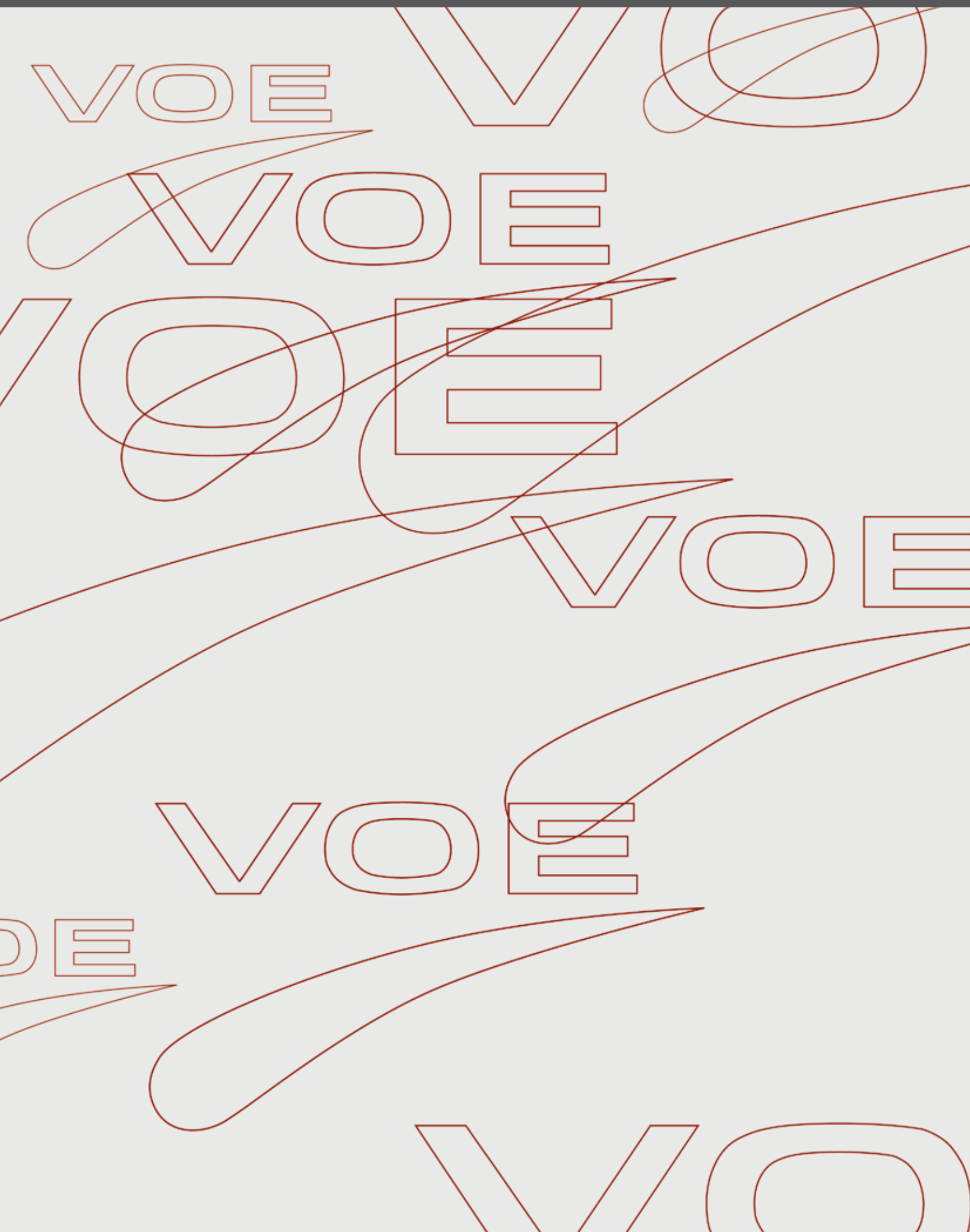


VOE
®



Since 1985, VOE, S.A. has specialized in the manufacture of compression garments for post-operative plastic and cosmetic surgery. Plastic surgeons worldwide rely on our products and prescribe them to their patients.

In order to achieve controlled pressure in the treatment area, VOE garments are crafted from breathable, long-lasting multidirectional elastic fabrics.

The use of VOE garments improves post-operative healing, aids body sculpting and accelerates the resolution of swelling in the treatment area. The garments' design and manufacture ensure full comfort and top-quality finishes.

The garments listed herein are grouped according to the type of surgery.

LIPOSUCTION GARMENTS

- STANDARD GIRDLES	2
- STANDARD GIRDLES WITH ZIPPERED CLOSURES	4
- SECOND-STAGE STANDARD GIRDLES	6
- REINFORCED GIRDLES FOR SUPERFICIAL LIPOSUCTION	8
- BODYSHAPERS	10
- STANDARD GIRDLES WITH EXTENDED BACK	12

POST-OPERATIVE GARMENTS FOR ARM AND BACK SURGERY 13

ABDOMINAL GARMENTS 14

POST-OPERATIVE GARMENTS FOR BREAST SURGERY 16

FACIAL GARMENTS 21

MALE COLLECTION 22

TABLES OF MEASUREMENT 24

LIPOSUCTION GARMENTS

STANDARD GIRDLES

Recommended for the post-operative period following abdominal, trochanter, thigh and knee liposuction, as well as thigh lifts.

This garment contains a row of front hook-and-eye closures for easy placement immediately after surgery. Hook-and-eye closures have three positions in order to reduce the garment size once the inflammation has subsided in the treatment area. All models are manufactured with an open crotch, except Art. 3007, 3007-2, 3007w and 3007w-2, which close with hook-and-eye closures.



ANKLE-LENGTH GIRDLE

Art. 3011 (beige)
Art. 3011-2 (black)
Sizes: 75 (XXXS) to 115 (XXXL)



ANKLE-LENGTH GIRDLE WITH ABDOMINAL EXTENSION

Art. 3012 (beige)
Art. 3012-2 (black)
Sizes: 75 (XXXS) to 115 (XXXL)



FULL-LENGTH TIGHTS

Art. 3008 (beige)
Art. 3008-2 (black)
Sizes: S, M, L and XL



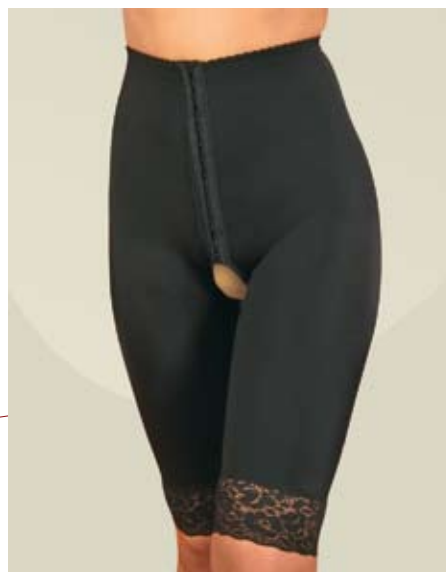
**ABDOMINAL SUPPORTER
TO THE WAIST**

Art. 3007W (beige)
Art. 3007W-2 (black)
Sizes: 75 (XXXS) to 115 (XXXL)



**ABDOMINAL SUPPORTER
WITH STRAPS**

Art. 3007 (beige)
Art. 3007-2 (black)
Sizes: 75 (XXXS) to 115 (XXXL)



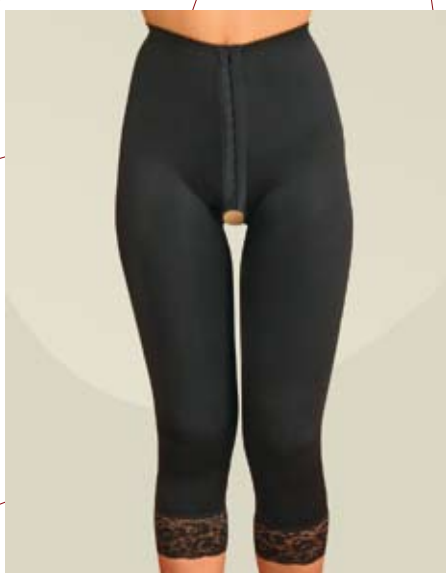
ABOVE THE KNEE GIRDLE

Art. 3002 (beige)
Art. 3002-2 (black)
Sizes: 75 (XXXS) to 115 (XXXL)



**GIRDLE WITH ABDOMINAL
EXTENSION ABOVE THE KNEE**

Art. 3004 (beige)
Art. 3004-2 (black)
Sizes: 75 (XXXS) to 115 (XXXL)



BELOW THE KNEE GIRDLE

Art. 3006 (beige)
Art. 3006-2 (black)
Sizes: 75 (XXXS) to 115 (XXXL)



**GIRDLE WITH ABDOMINAL
EXTENSION BELOW THE KNEE**

Art. 3009 (beige)
Art. 3009-2 (black)
Sizes: 75 (XXXS) to 115 (XXXL)

LIPOSUCTION GARMENTS

STANDARD GIRDLES WITH ZIPPERED CLOSURES

Standard liposuction girdles with openings on garment sides are also available. Two zippered closures are provided for closing the garment. Girdles with zippered closures are available in beige and black.



**ABDOMINAL SUPPORTER WITH
STRAPS AND ZIPPERED CLOSURES**

Art. 3007Z (beige)
Art. 3007Z-2 (black)
Sizes: 75 (XXXS) to 115 (XXXL)



**ABOVE THE KNEE GIRDLE WITH
ZIPPERED CLOSURES**

Art. 3002Z (beige)
Art. 3002Z-2 (black)
Sizes: 75 (XXXS) to 115 (XXXL)



**GIRDLE WITH ABDOMINAL
EXTENSION ABOVE THE KNEE WITH
ZIPPERED CLOSURES**

Art. 3004Z (beige)
Art. 3004Z-2 (black)
Sizes: 75 (XXXS) to 115 (XXXL)

STANDARD GIRDLES WITH ZIPPERED CLOSURES



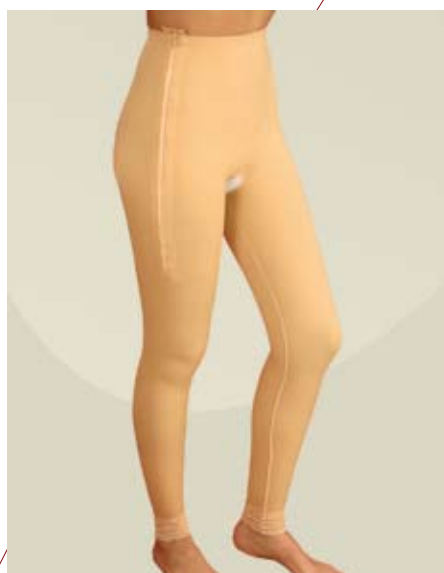
BELOW THE KNEE GIRDLE WITH ZIPPERED CLOSURES

Art. 3006Z (beige)
Art. 3006Z-2 (black)
Sizes: 75 (XXXS) to 115 (XXXL)



GIRDLE WITH ABDOMINAL EXTENSION BELOW THE KNEE WITH ZIPPERED CLOSURES

Art. 3009Z (beige)
Art. 3009Z-2 (black)
Sizes: 75 (XXXS) to 115 (XXXL)



ANKLE-LENGTH GIRDLE WITH ZIPPERED CLOSURES

Art. 3011Z (beige)
Art. 3011Z-2 (black)
Sizes: 75 (XXXS) to 115 (XXXL)

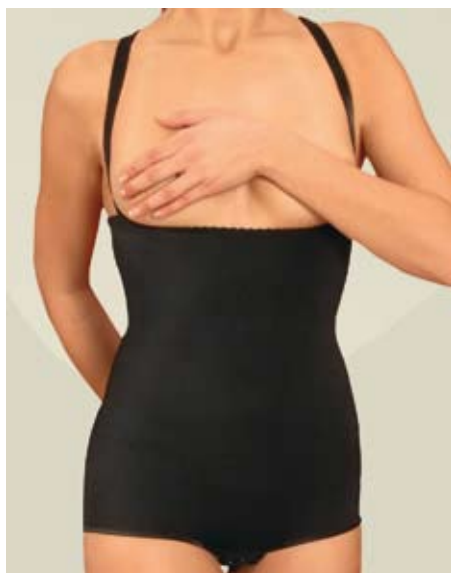
LIPOSUCTION GARMENTS

SECOND-STAGE STANDARD GIRDLES

At the physician's discretion, the use of a compression garment following liposuction can comprise two stages. The first stage follows the immediate post-operative period and the first few days of treatment. A girdle with front (hook-and-eye closure) or side (zippered closure) opening should be used during this period.

Second-stage liposuction girdles are designed to be worn as an intermediate garment between the first-stage garment and the normal intimate apparel worn by the patient. These garments are fully closed and suitable for longer post-operative periods.

Second-stage liposuction girdles are available in beige and black.



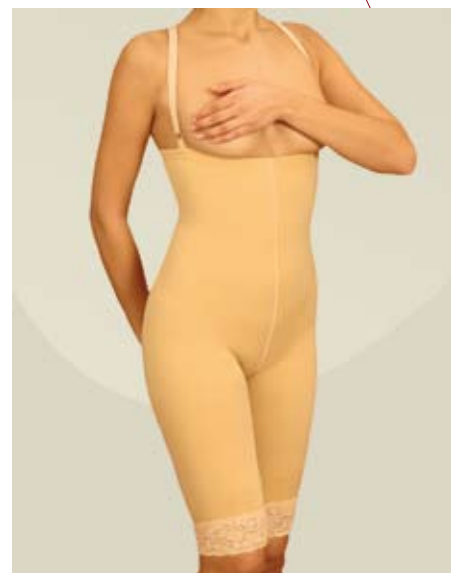
**ABDOMINAL SUPPORTER WITH
STRAPS, SECOND-STAGE**

Art. 3007C (beige)
Art. 3007C-2 (black)
Sizes: 75 (XXXS) to 115 (XXXL)



**ABOVE THE KNEE GIRDLE,
SECOND-STAGE**

Art. 3002C (beige)
Art. 3002C-2 (black)
Sizes: 75 (XXXS) to 115 (XXXL)



**GIRDLE WITH ABDOMINAL
EXTENSION ABOVE THE KNEE,
SECOND-STAGE**

Art. 3004C (beige)
Art. 3004C-2 (black)
Sizes: 75 (XXXS) to 115 (XXXL)

SECOND-STAGE STANDARD GIRDLES



**GIRDLE WITH ABDOMINAL
EXTENSION BELOW THE KNEE,
SECOND-STAGE**

Art. 3009C (beige)
Art. 3009C-2 (black)
Sizes: 75 (XXXS) to 115 (XXXL)



**BELOW THE KNEE GIRDLE,
SECOND-STAGE**

Art. 3006C (beige)
Art. 3006C-2 (black)
Sizes: 75 (XXXS) to 115 (XXXL)



**ANKLE-LENGTH GIRDLE,
SECOND-STAGE**

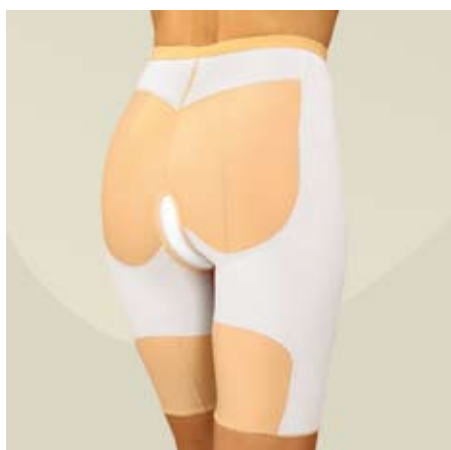
Art. 3011C (beige)
Art. 3011C-2 (black)
Sizes: 75 (XXXS) to 115 (XXXL)

LIPOSUCTION GARMENTS

REINFORCED GIRDLES FOR SUPERFICIAL LIPOSUCTION

These girdles have been designed for selective compression and sculpting of the side areas of the thighs, buttocks, thigh contour, gluteal fold and abdomen. Waist internal reinforcements (with double fabric) are arranged to enhance skin retraction in the vertical direction. The double fabric has a micro-massage effect on the treated areas to rapidly reduce the swelling. Reinforced liposuction girdles are available in beige. Their hook-and-eye closures have three positions.

* Inside out view of the garment showing the double material reinforcements



**ABDOMINAL SUPPORTER WITH
REINFORCED FRONT AND STRAPS**

Art. 3014 (beige)
Sizes: 75 (XXXS) to 115 (XXXL)



**ABOVE THE KNEE GIRDLE WITH
REINFORCEMENT**

Art. 3001 (beige)
Sizes: 75 (XXXS) to 115 (XXXL)

REINFORCED GIRDLES FOR SUPERFICIAL LIPOSUCTION



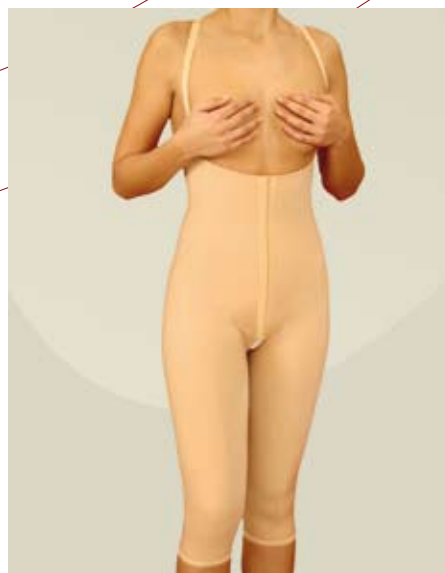
**GIRDLE WITH ABDOMINAL
EXTENSION ABOVE THE KNEE WITH
REINFORCEMENT**

Art. 3003 (beige)
Sizes: 75 (XXXS) to 115 (XXXL)



**BELOW THE KNEE GIRDLE WITH
REINFORCEMENT**

Art. 3005 (beige)
Sizes: 75 (XXXS) to 115 (XXXL)



**GIRDLE WITH ABDOMINAL
EXTENSION BELOW THE KNEE WITH
REINFORCEMENT**

Art. 3010 (beige)
Sizes: 75 (XXXS) to 115 (XXXL)

LIPOSUCTION GARMENTS

BODYSHAPERS

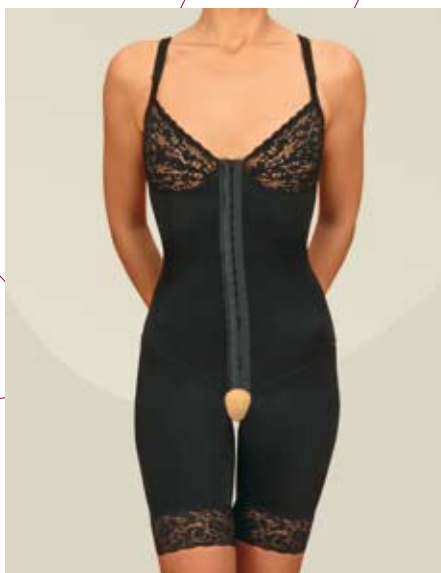
These garments, conceived for the liposuction post-operative period, include an appealing lace bra. In addition to their therapeutic function, they feature an elegant design.

All styles are opened by means of a three row of hook-and-eye closures in the front of the garment. Bodyshapers are available in black only.



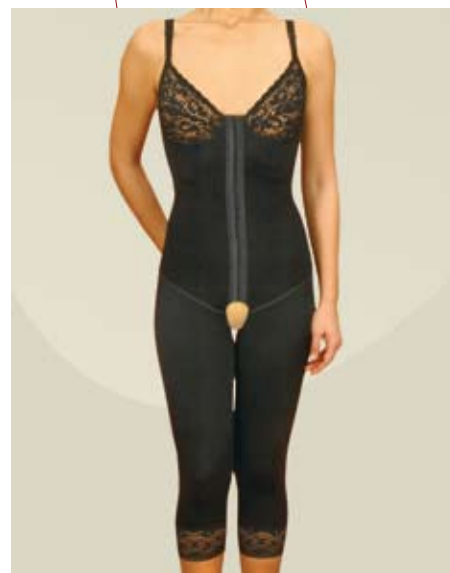
CLASSIC BODYSHAPER

Art. 5004 (black)
Sizes: 75 (XXXS) to 115 (XXXL)



ABOVE THE KNEE BODYSHAPER

Art. 5002 (black)
Sizes: 75 (XXXS) to 115 (XXXL)



BELOW THE KNEE BODYSHAPER

Art. 5003 (black)
Sizes: 75 (XXXS) to 115 (XXXL)

FULL BODYSHAPERS (WITH VEST INCORPORATED)

They are the perfect garments for combination procedures of breast surgery with multiple area liposuction. Their hook-and-eye closures have three positions.



CLASSIC FULL BODYSHAPER

Art. 5010 (beige)
Art. 5010-2 (black)
Sizes: 75 (XXXS) to 115 (XXXL)



ABOVE THE KNEE FULL BODYSHAPER

Art. 5011 (beige)
Art. 5011-2 (black)
Sizes: 75 (XXXS) to 115 (XXXL)



BELOW THE KNEE FULL BODYSHAPER

Art. 5012 (beige)
Art. 5012-2 (black)
Sizes: 75 (XXXS) to 115 (XXXL)

LIPOSUCTION GARMENTS

STANDARD GIRDLES WITH EXTENDED BACK

Recommended for post-operative use following abdominal, trochanter, thigh, knee and ankle liposuction combined with back liposuction. Hook-and-eye closures have three positions. The girdles are available in beige or black.



ABDOMINAL SUPPORT WITH EXTENDED BACK

Art. 3007E (beige)
Art. 3007E-2 (black)
Sizes: 75 (XXXS) to 115 (XXXL)



GIRDLE WITH ABDOMINAL EXTENSION ABOVE THE KNEE AND EXTENDED BACK

Art. 3004E (beige)
Art. 3004E-2 (black)
Sizes: 75 (XXXS) to 115 (XXXL)



GIRDLE WITH ABDOMINAL EXTENSION BELOW THE KNEE AND EXTENDED BACK

Art. 3009E (beige)
Art. 3009E-2 (black)
Sizes: 75 (XXXS) to 115 (XXXL)



ANKLE-LENGTH GIRDLE WITH ABDOMINAL EXTENSION AND EXTENDED BACK

Art. 3012E (beige)
Art. 3012E-2 (black)
Sizes: 75 (XXXS) to 115 (XXXL)

Specially designed vest for the post-operative period following liposuction of arms and back. It opens in the front with a three row of hook-and-eye closures and is manufactured with a low neckline to wear underneath normal clothing.



FEMALE LIPOSUCTION VEST

Art. 1011 (beige)
Art. 1011-2 (black)
Sizes: S, M, L, XL and XXL

This is the ideal garment for the post-operative period following arm liposuction. The two sleeves are positioned by adjustable hook-and-eye closures in the back and a clear, adjustable strap in the front.



SLEEVES FOR LIPOSUCTION

Art. 1008 (beige)
Art. 1008-2 (black)
Sizes: S, M, L, XL and XXL



**BACK VIEW OF SLEEVES FOR
LIPOSUCTION**

ABDOMINAL GARMENTS

Suitable for post-operative abdominoplasty and abdomen lipectomy, as well as other types of abdominal surgery.

The double fastener with three rows of hooks enables the garment to adapt to the body as the swelling subsides.



FEMALE ABDOMINAL SUPPORTER WITH FASTENERS

Art. 4008 (beige)
Art. 4008-2 (black)
Sizes: XXS, XS, S, M, L and XL

The side velcro closures ensure proper fit of the garment. In the scar area, additional compression is achieved by padded reinforcement in the front of the supporter.



FEMALE SUPPORTER

Art. 4002 (white)
Art. 4002-2 (black)
Sizes: XS, S, M, L and XL



FEMALE SUPPORTER WITH STRAPS

Art. 4002T (white)
Art. 4002T-2 (black)
Sizes: XS, S, M, L and XL

Recommended for the abdominal surgery post-operative period, as well as postpartum and pelvic retraction. The garment is specially designed with separate sections to ensure a proper fit. Pressure is adjustable by means of a convenient closure system with velcro tape and adhesive fabric.



ABDOMINAL BINDERS
THREE-PANEL

Art. 4003 height 24 cm (white)
Sizes: XS, S, M, L and XL



ABDOMINAL BINDERS
FOUR-PANEL

Art. 4004 height 32 cm (white)
Sizes: XS, S, M, L and XL

POST-OPERATIVE GARMENTS FOR BREAST SURGERY

Manufactured from an elastic fabric with stiff reinforcement to ensure pressure in areas where scarring normally takes place.



BRA FOR REDUCTION MAMMOPLASTY

Art. 2002 (white)
Sizes: 80 (XXS) to 105 (XL)
B Cup

This high cotton bra has moulded (seamless) double-layer cups, padded straps with back fastening and adjustment. Highly recommended for post-operative breast augmentation and reduction.



COBRE – ORO – EBANO (MODEL V)

Art. 2011-V (white) COBRE
Art. 2012-V (mink) ORO
Art. 2020-V (black) EBANO
Sizes: 80 (XXS) to 105 (XL)
B, C and D Cups

This bra has frontal zip closure and back adjustment. Highly recommended for post-operative breast augmentation and reduction.



COBRE – ORO – EBANO (MODEL VF)

Art. 2011-VF (white) COBRE
Art. 2012-VF (mink) ORO
Art. 2020-VF (black) EBANO
Sizes: 80 (XXS) to 105 (XL)
B, C and D Cups

Full-bodied cotton bra with seamless, moulded, double-layer cups. It has a frontal zip closure and wide adjustable velcro straps. Highly recommended for post-operative breast augmentation and reduction.

This cotton sports bra has moulded, double-layer, seamless cups. The shaping on the inside of the cups, along with the garment's crossover front design, guarantees correct positioning of the breasts. Highly recommended for post-operative breast augmentation.

This cotton bra is smooth and light and has high moulded cups to prevent skin folds under the breast. Highly recommended for post-operative breast augmentation.



MIMA

Art. 2001-N (white)
Art. 2001 N-N (black)
Sizes: 80 (XXS) to 115 (XXXL)
B Cup



LUNA

Art. 2032-V (white)
Art. 2032 N-V (black)
Sizes: 80 (XXS) to 105 (XL)
B Cup



SOFT

Art. 2040 B-V (white)
Sizes: 85 (XS) to 105 (XL)
B Cup

POST-OPERATIVE GARMENTS FOR BREAST SURGERY

This soft micro fibre bra has a very comfortable design with its wide cups and back strap for optimal breast positioning and perfect back fit. Highly recommended for post-operative breast augmentation and reduction.



COMFORT

Art. 2045 (white)
Sizes: 80 (XXS) to 105 (XL)
B Cup

This sports bra has a frontal closure, adjustable straps with velcro and V style back for perfect adjustment and free movement. Highly recommended for post-operative breast augmentation.



GYM

Art. 2047-VF (white)
Sizes: 80 (XXS) to 105 (XL)
B Cup



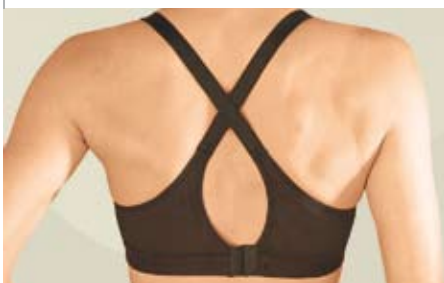
BACK VIEW OF THE GYM SPORTS BRA

This seamless sports bra, containing micro fibre, has moulded, double-layer cups. The inside of the cups, the centre piece and the back are fashioned in extremely breathable material with back fastening and adjustment. Highly recommended for post-operative breast augmentation.



SPORT (MODEL V)

Art. 2033 B-V (white)
Art. 2033 N-V (black)
Sizes: 80 (XXS) to 105 (XL)
B, C and D Cups



BACK VIEW OF SPORTS BRA MODEL V AND MODEL VF

It also has adjustable straps with velcro closures so it may be worn in normal position or crossed over at the back, both in the V and VF models.

This bra has a frontal zip closure and back adjustment. Highly recommended for post-operative breast augmentation.



SPORT (MODEL VF)

Art. 2033 B-VF (white)
Art. 2033 N-VF (black)
Sizes: 80 (XXS) to 105 (XL)
B, C and D Cups

POST-OPERATIVE GARMENTS FOR BREAST SURGERY

The pressure provided by this bra keeps the implant in place by the elasticity of the upper band of the garment (adjustable with velcro closures on both ends).

Ideal for proper implant positioning in the post-operative period following augmentation mammoplasty.

This micro fibre garment gently supports the breasts and incorporates an elastic band in the front stabilizing and positioning the implants. It is highly recommended for post-operative breast augmentation.



**BRA FOR AUGMENTATION
MAMMOPLASTY**

Art. 2003 (white)
Sizes: S, M, L and XL



CHEST BAND

Art. 2005 (white)
One size fits all



LERMA

Art. 2039 (white)
Sizes: S, M and L

Indicated for post-operative blepharoplasty. This comfortable mask is easily adjustable with pockets to hold cold gel pads.



EYE MASK / GEL PADS

Art. 7001: Eye mask
(various colours available).
Art. 7002:
Box of 5 packs of 4 cold gel pads.
Art. 7003:
Eye mask + 1 pack of 4 cold gel pads.

Manufactured from breathable, easily adaptable fabric with velcro-type closures. Suitable for use in the post-operative period following face lifts, chin liposuction, otoplasty and maxillofacial surgery.



FACE BAND

Art. 1004 (white)
One size fits all



STANDARD FACIAL CHIN-NECK BANDAGE

Art. 1003 (beige)
Sizes: S, M, L
Specially designed for face lifts and liposuctions. Made of comfortable light weight fabric.



REINFORCED FACIAL CHIN-NECK BANDAGE

Art. 1002 (white) | Sizes: S, M, L
Recommended for the post-operative period following face lifts and chin area liposuction. This garment is reinforced to obtain additional compression values.

MALE COLLECTION

Chest band for the post-operative gynecomastia surgery. This garment has two separate bands that join to ensure proper fit in the treatment area. Pressure is adjustable with a velcro closure system.



CHEST BANDS

Art. 4005 (white)
Sizes: S, M and L

Suitable for the post-operative gynecomastia surgery, as well as other types of chest surgery.



MALE VEST

Art. 2006 (beige)
Art. 2006-2 (black)
Sizes: 75 (XXXS) to 115 (XXXL)

Suitable for post-operative gynecomastia, as well as for any other kind of chest surgery. It has a front closure with three rows of hooks.



VEST WITH FRONT CLOSURE

Art. 5007 (beige)
Art. 5007-2 (black)
Sizes: 75 (XXXS) to 115 (XXXL)

Ideal for post-operative period following combined chest and abdominal surgery.

This bodyshaper is specially designed to be used during post-operative periods for combined chest, abdominal and thigh surgery. It has front closure with three rows of hooks.



MALE BRIEF ABOVE THE KNEE

Art. 5008 (beige)
Art. 5008-2 (black)
Sizes: 75 (XXXS) to 115 (XXXL)

This garment is suitable for use during post-operative periods for combined abdominal, thigh and gluteal implants surgery. It has front closure with three rows of hooks.



MALE BODYSHAPER

Art. 5005 (beige)
Art. 5005-2 (black)
Sizes: 75 (XXXS) to 115 (XXXL)



MALE ABOVE KNEE BODYSHAPER

Art. 5006 (beige)
Art. 5006-2 (black)
Sizes: 75 (XXXS) to 115 (XXXL)



MALE BRIEF

Art. 4001 (beige)
Art. 4001-2 (black)
Sizes: 75 (XXXS) to 115 (XXXL)
Suitable for the post-operative abdominal surgery.

TABLES OF MEASUREMENT

LIPOSUCTION GARMENTS						
SIZES	WAIST		HIPS		THIGHS	
	CM	IN.	CM	IN.	CM	IN.
75 (XXXS)	58-64	22 ^{3/4} - 25 ^{1/2}	85-90	33 ^{1/2} - 35 ^{1/2}	46-49	18 - 19 ^{1/4}
80 (XXS)	64-68	25 ^{1/2} - 26 ^{3/4}	90-95	35 ^{1/2} - 37 ^{1/2}	49-52	19 ^{1/4} - 20 ^{1/2}
85 (XS)	68-72	26 ^{3/4} - 28 ^{1/2}	95-100	37 ^{1/2} - 39 ^{1/2}	52-55	20 ^{1/2} - 21 ^{3/4}
90 (S)	72-76	28 ^{1/2} - 30	100-105	39 ^{1/2} - 41 ^{1/2}	55-58	21 ^{3/4} - 23
95 (M)	76-80	30 - 31 ^{1/2}	105-110	41 ^{1/2} - 43 ^{1/2}	58-61	23 - 24 ^{1/4}
100 (L)	80-85	31 ^{1/2} - 33 ^{1/2}	110-115	43 ^{1/2} - 45 ^{1/2}	61-64	24 ^{1/4} - 25 ^{1/2}
105 (XL)	85-90	33 ^{1/2} - 35 ^{1/2}	115-120	45 ^{1/2} - 47 ^{1/2}	64-67	25 ^{1/2} - 26 ^{3/4}
110 (XXL)	90-95	35 ^{1/2} - 37 ^{1/2}	120-125	47 ^{1/2} - 49 ^{1/2}	67-69	26 ^{3/4} - 28
115 (XXXL)	95-100	37 ^{1/2} - 39 ^{1/2}	125-135	49 ^{1/2} - 53 ^{1/2}	69-71	28 - 29 ^{1/4}

The most important measurement is the hip circumference.

LIPOSUCTION VEST FOR WOMEN				
SIZE	MEASUREMENT BELOW BUST		UPPER ARM CIRCUMFERENCE	
	CM	IN.	CM	IN.
S	70-77	27 ^{1/2} - 30 ^{1/4}	24-27	9 ^{1/2} - 10 ^{3/4}
M	77-84	30 ^{1/4} - 33	27-30	10 ^{3/4} - 12
L	84-91	33 - 35 ^{3/4}	30-33	12 - 13 ^{1/4}
XL	91-98	35 ^{3/4} - 38 ^{1/2}	33-36	13 ^{1/4} - 14 ^{1/2}
XXL	98-105	38 ^{1/2} - 41 ^{1/2}	36-40	14 ^{1/2} - 16

LIPOSUCTION SLEEVES		
SIZE	UPPER ARM CIRCUMFERENCE	
	CM	IN.
S	24-27	9 ^{1/2} - 10 ^{3/4}
M	27-30	10 ^{3/4} - 12
L	30-33	12 - 13 ^{1/4}
XL	33-36	13 ^{1/4} - 14 ^{1/2}
XXL	36-40	14 ^{1/2} - 16

FEMALE SUPPORTER		
SIZE	ABDOMEN CIRCUMFERENCE	
	CM	IN.
XXS	60-70	23 ^{1/2} - 27 ^{1/2}
XS	70-80	27 ^{1/2} - 31 ^{1/2}
S	80-90	31 ^{1/2} - 35 ^{1/2}
M	90-100	35 ^{1/2} - 39 ^{1/2}
L	100-110	39 ^{1/2} - 43 ^{1/2}
XL	110-120	43 ^{1/2} - 47 ^{1/2}

BRAS								
SIZE	BELOW BUST		UPPER BUST CIRCUMFERENCE B CUP		UPPER BUST CIRCUMFERENCE C CUP		UPPER BUST CIRCUMFERENCE D CUP	
	CM	IN.	CM	IN.	CM	IN.	CM	IN.
80 (XXS)	63-67	25 - 26 ^{1/2}	78-82	31 - 32 ^{1/2}	82-85	32 ^{1/2} - 33 ^{1/2}	85-88	33 ^{1/2} - 35
85 (XS)	68-72	27 - 28 ^{1/2}	83-87	33 - 34 ^{1/2}	87-90	34 ^{1/2} - 35 ^{1/2}	90-93	35 ^{1/2} - 37
90 (S)	73-77	29 - 30 ^{1/2}	88-92	35 - 36 ^{1/2}	92-95	36 ^{1/2} - 37 ^{1/2}	95-98	37 ^{1/2} - 39
95 (M)	78-82	31 - 32 ^{1/2}	93-97	37 - 38 ^{1/2}	97-100	38 ^{1/2} - 39 ^{1/2}	100-103	39 ^{1/2} - 41
100 (L)	83-87	33 - 34 ^{1/2}	98-102	39 - 40 ^{1/2}	102-105	40 ^{1/2} - 41 ^{1/2}	105-108	41 ^{1/2} - 43
105 (XL)	88-92	35 - 36 ^{1/2}	103-107	41 - 42 ^{1/2}	107-110	42 ^{1/2} - 43 ^{1/2}	110-113	43 ^{1/2} - 45

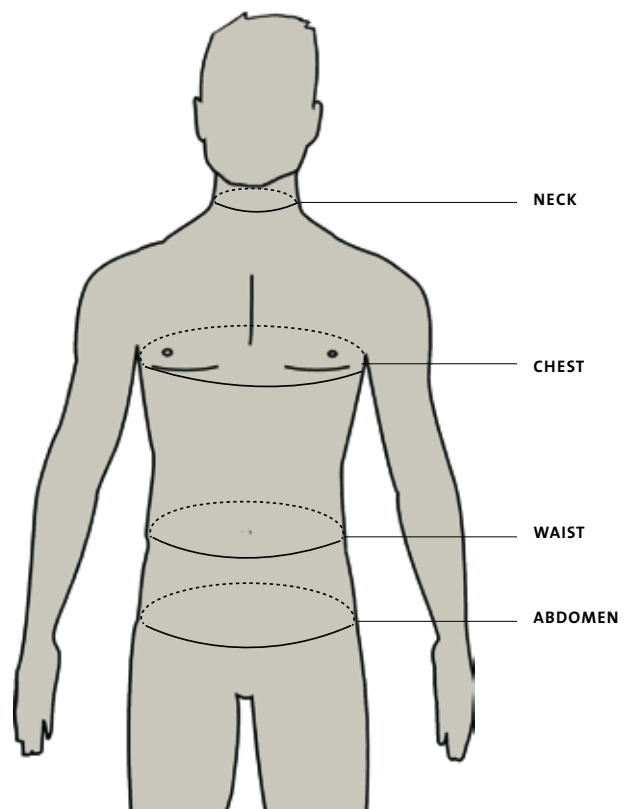
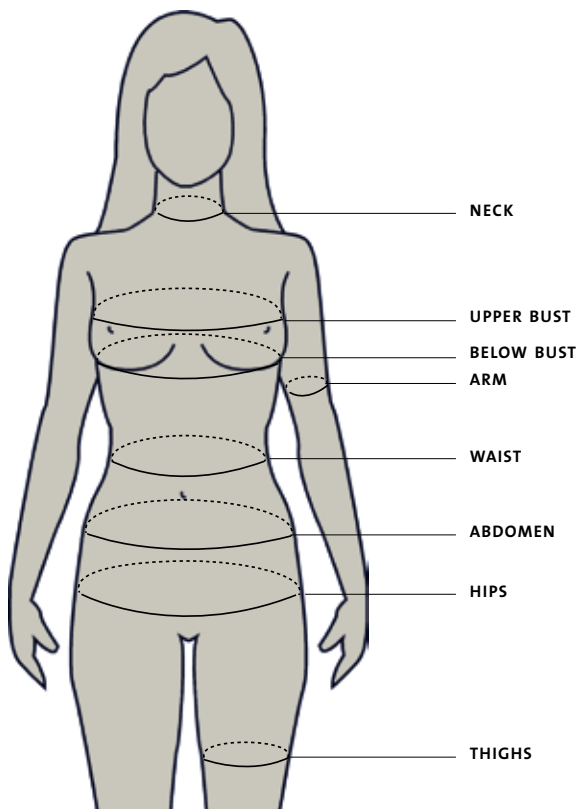
BRA SIZE CONVERSION TABLE						
Spain-France	80	85	90	95	100	105
Germany	65	70	75	80	85	90
Italy	1	2	3	4	5	6
U.K. - U.S.A.	30	32	34	36	38	40

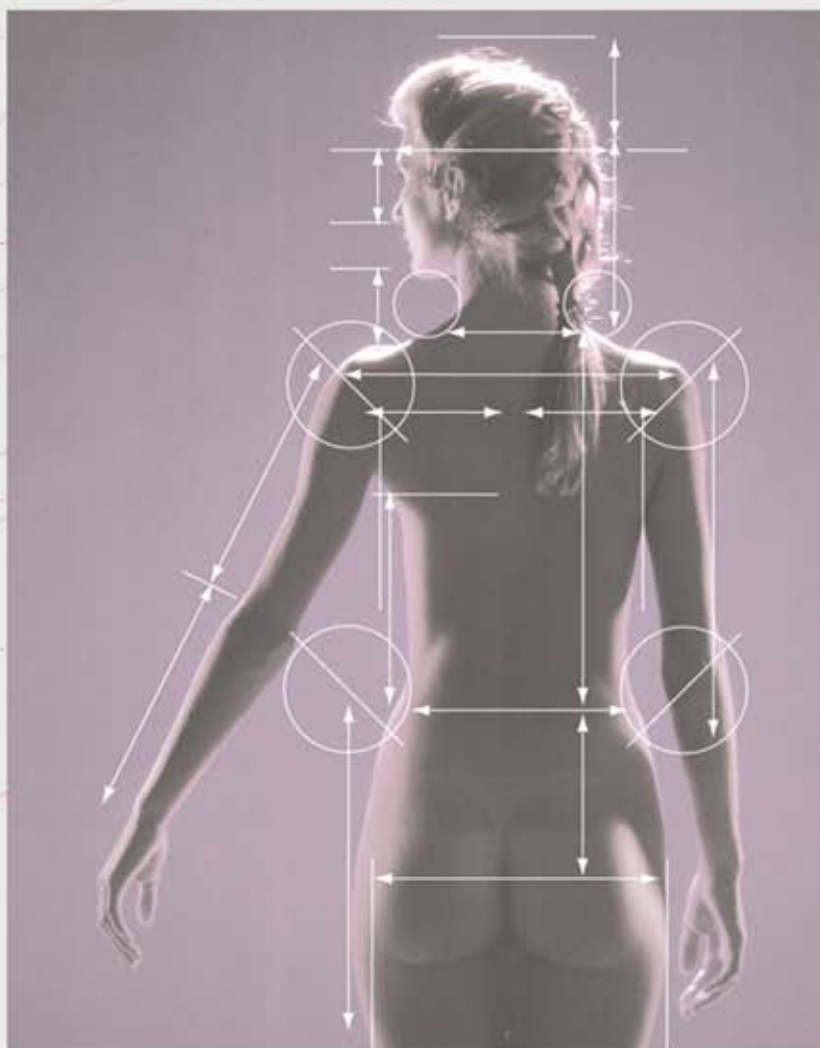
Special sizes are available by custom order (all styles)

MALE COLLECTION				
SIZE	MAXIMUM CHEST CIRCUMFERENCE		WAIST CIRCUMFERENCE	
	CM	IN.	CM	IN.
75 (XXXS)	90-95	35 ^{1/2} - 37 ^{1/2}	80-85	31 ^{1/2} - 33 ^{1/2}
80 (XXS)	95-100	37 ^{1/2} - 39 ^{1/2}	85-90	33 ^{1/2} - 35 ^{1/2}
85 (XS)	100-105	39 ^{1/2} - 41 ^{1/2}	90-95	35 ^{1/2} - 37 ^{1/2}
90 (S)	105-110	41 ^{1/2} - 43 ^{1/2}	95-100	37 ^{1/2} - 39 ^{1/2}
95 (M)	110-115	43 ^{1/2} - 45 ^{1/2}	100-105	39 ^{1/2} - 41 ^{1/2}
100 (L)	115-120	45 ^{1/2} - 47 ^{1/2}	105-110	41 ^{1/2} - 43 ^{1/2}
105 (XL)	120-125	47 ^{1/2} - 49 ^{1/2}	110-115	43 ^{1/2} - 45 ^{1/2}
110 (XXL)	125-130	49 ^{1/2} - 51 ^{1/2}	115-120	45 ^{1/2} - 47 ^{1/2}
115 (XXXL)	130-135	51 ^{1/2} - 53 ^{1/2}	120-125	47 ^{1/2} - 49 ^{1/2}

ABDOMINAL / CHEST BINDERS		
SIZE	ABDOMEN / CHEST CIRCUMFERENCE	
	CM	IN.
XS	50-70	19 ^{1/2} - 27 ^{1/2}
S	70-90	27 ^{1/2} - 35 ^{1/2}
M	90-110	35 ^{1/2} - 43 ^{1/2}
L	110-130	43 ^{1/2} - 51 ^{1/2}
XL	130-150	51 ^{1/2} - 59 ^{1/2}

CHIN-NECK BANDAGE		
SIZE	NECK CIRCUMFERENCE	
	CM	IN.
S	27-31	10 ^{3/4} - 12 ^{1/4}
M	32-37	12 ^{3/4} - 14 ^{1/2}
L	38-46	15 - 18 ^{3/4}





VOE, S.A

Aribau, 39
08011 Barcelona

Tel. +34 93 451 64 52
Fax: +34 93 451 76 22

e-mail: info@voe.es
www.voe.es

